

EPID-600 Introduction to Public Health Maternal & Child Health, Women's Health Issues

[PDF](#)

Objectives

Upon completion of this seminar the students should be able to describe

- Maternal Health, Children's and Women's programs administered by state and local health departments.
- The main policy and management issues in Maternal and Child Health programs
- The role of local public health agencies in developing programs for Women.
- The contribution of local health departments to reducing morbidity & mortality among children and pregnant women.
- The value of the MCH programs in improving the health of the community.
- [Competencies](#): 1A(2,7,8), B(1), C(1, 2,6,7,8), D(1,5,6,7,8,9). E(1,4,7,9) F(1-5), 11A(1-7)

Key Words

Pregnancy
Fertility
Chronic Diseases
Women's health studies
Infant Mortality
Family support services
Immunization
Cancers
Preventive Intervention
Health education
Community services (non governmental)

Concept:

The health needs of children, adolescents, and women are unique. Programs designed for these populations should be tailored to these needs.>

References:

Handouts.
Course Essays [9](#), [12](#)
Introduction to Public Health. Schneider, 2nd Edn. Chapter 18

[Go to lecture:](#)

EPID-600 Introduction to Public Health Women's & Maternal and Child Health Programs

MCH programs were the original focus of public health, and continue to be a major focus in the USA as well as the remainder of the world. To assist you, in starting to learn about the breadth and depth of women's and children's health and the interwoven programs, we provide the following PowerPoint slide shows as well as a set of Hotlinks to useful health sites for women and children. Review the contents of the hot links prior to the class.

1) [Introduction](#) Prepared by Ted Tweel MD MPH (.pdf) Then look at the [History of MCH](#) from HRSA's MCH Bureau

2) Look at the excellent data set at [Women's Health 2007](#) Read the Introduction and Health Indicators.

Then review [Slides \(printable version\)](#) provided by **Deborah Harris MPH, RD, CDE**

Also scan the following pdf files:

[Collaborating](#) to Improving Women's Health

Virginia Women's [Health Statistics](#)

CDC [Office of Women's Health: An Overview](#)

KFF on [Perspectives](#) on Women and Health Care (2005) Start with the highlights.

Look at these [resources](#) for Women's Health :

[Wake up](#)

[Women's Health Virginia](#)

[Death Rates 1997 by age and race](#) do you think there is a significant difference between men & women?

March of Dimes - Status of [newborn screening](#)

Women's & Children's [Health Policy Center](#) - JHU (Click on Projects)

Society for [Women's Health Research](#)

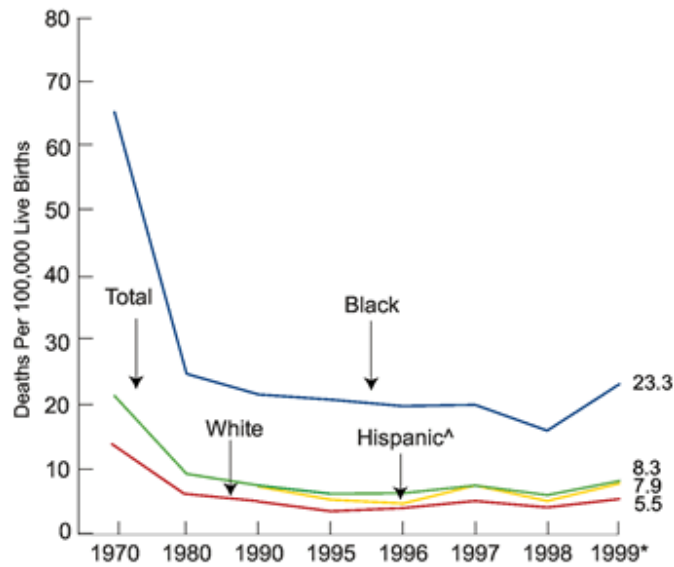
Maternal & Child Health Bureau of HRSA; [Programs](#) (remember this page for both discussions and Final exam)

Maternal & Child Health - [History of MCH](#) Look at the Milestones (Compare to MCH milestones, above)

ACOG: [Preterm Birth](#): Causes, Consequences, and Prevention

Age-Adjusted Maternal Mortality, by Race and Hispanic Origin, Selected Years 1970-1999

Source (II.1): National Vital Statistics System



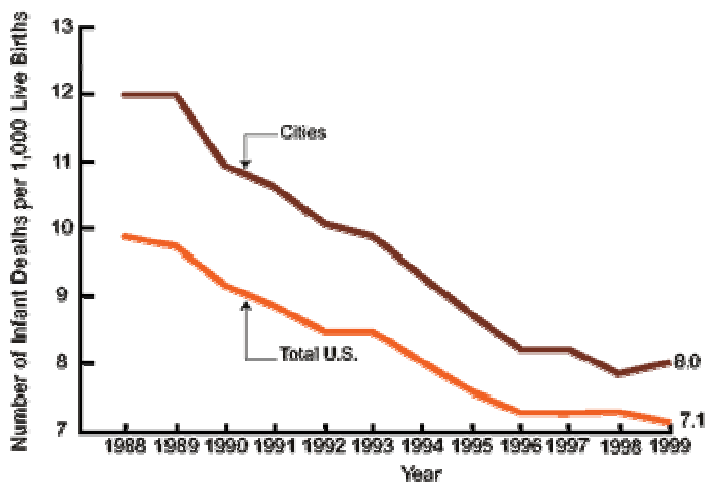
Note: Rates are age adjusted to the 1970 distribution of live births by mother's age in the U.S.

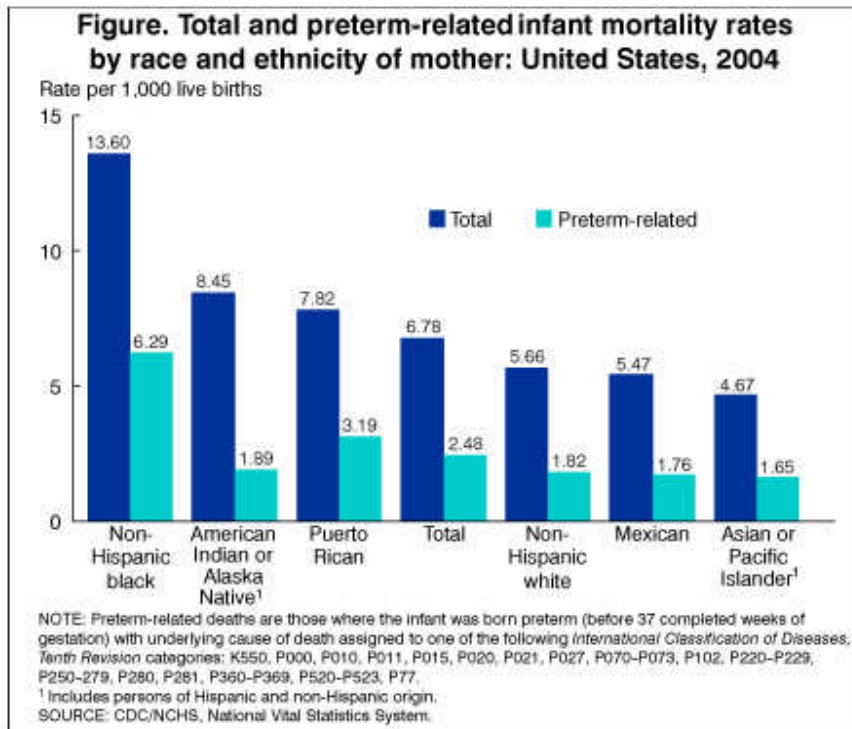
*Starting with 1999 data, changes have been made in the classification and coding of maternal deaths under ICD-10. The increase in the number of maternal deaths between 1998 and 1999 is due to changes associated with ICD-10.

[^]Data not available prior to 1990; excludes data from States lacking an Hispanic-origin item on their death and birth certificates.

INFANT MORTALITY RATES IN U.S. CITIES WITH POPULATION OVER 100,000: 1988-1999

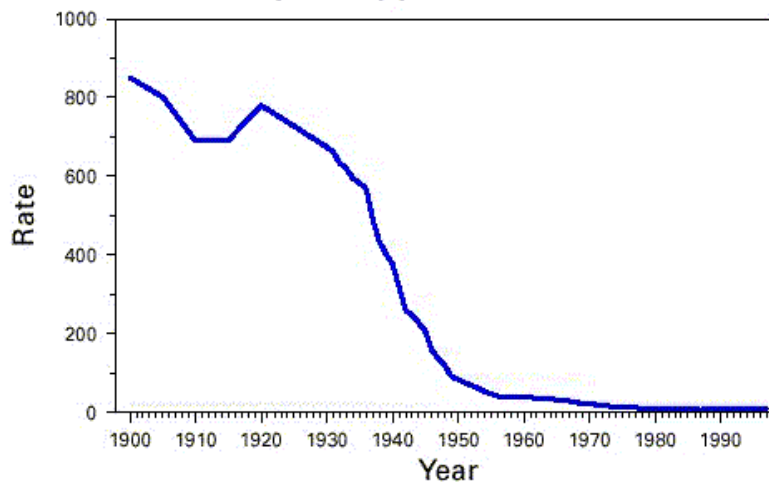
Source (M.2): National Center for Health Statistics





3) [Maternal & Child Health](#). ([Handouts](#)) Presented by **Joan Corder-Mabe RN MPH**.

FIGURE 2. Maternal mortality rate,* by year — United States, 1900-1997



*Per 100,000 live births.

Also **scan** these recent papers (1008) on Premature Birth and Black/White differences.

Editorial [from Lancet](#)

Epidemiology of [Preterm Birth](#) (look at data on Virginia's improvements from VDH website.)

Black Infant [Mortality](#)

From the KFF: Los Angeles Times Examines [Unintended Pregnancy Among Low-Income Women](#), Jun 26, 2006

Late Breaking (Nov. 2008) Nation Gets A "D" As March of Dimes Releases [Premature Birth Report Card](#) How does your home state rate?

4) [Children's Health](#) ([Handouts](#)) **Bethany Geldmaker, Ph.D.**, Virginia department of Health

AMA Site: [Adolescent health](#)

Look at: [Child Health USA 2007](#),

Child Health Links:

[KFF - Expanding Coverage for Children -- The Democrats' Power and SCHIP Reauthorization](#),"

Scan the [Kids Count](#) State-Level data-2008

Child Health Care [Quality Toolbox](#)

National Campaign to [Prevent Teen Pregnancy](#)

6) [MCH URLs](#).